



THE VICTORIA

PLAN E2a

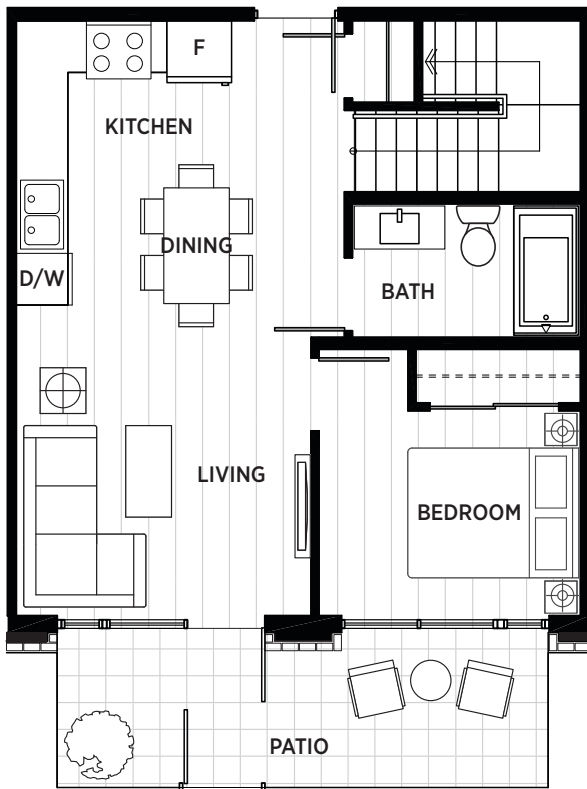
THREE BEDROOM + FLEX

TOTAL LIVING : 1220 - 1245 SQ.FT.

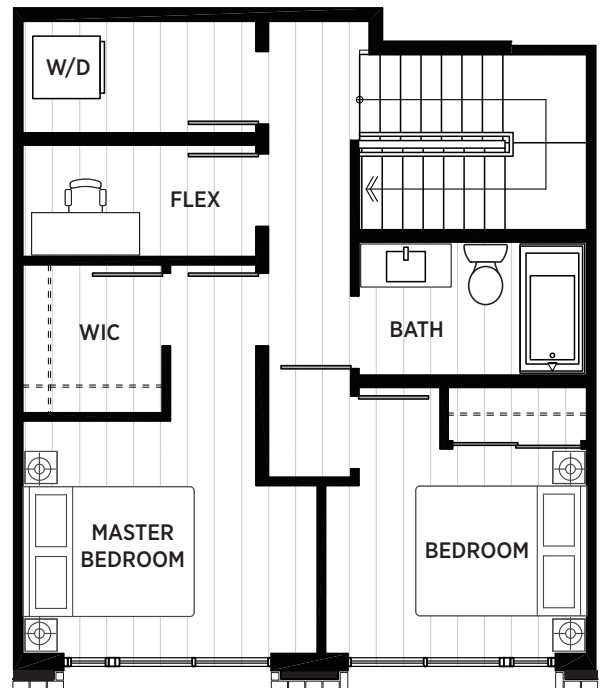
INDOOR : 1085 - 1110 SQ.FT.

OUTDOOR : 135 SQ.FT.

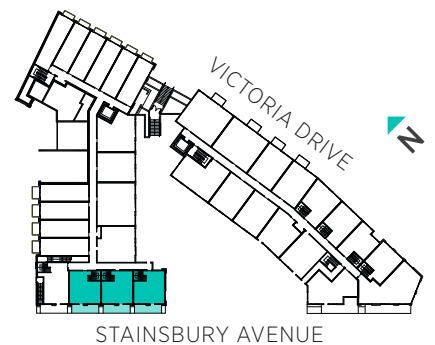
LOWER FLOOR



UPPER FLOOR



WEST BUILDING
2ND FLOOR | UNITS 204, 205, 206



*The developer reserves the right to make modifications and changes. Dimensions, sizes, specifications, layouts, and materials are approximate only, and may be different in person, or subject to change without notice E.&O.E.