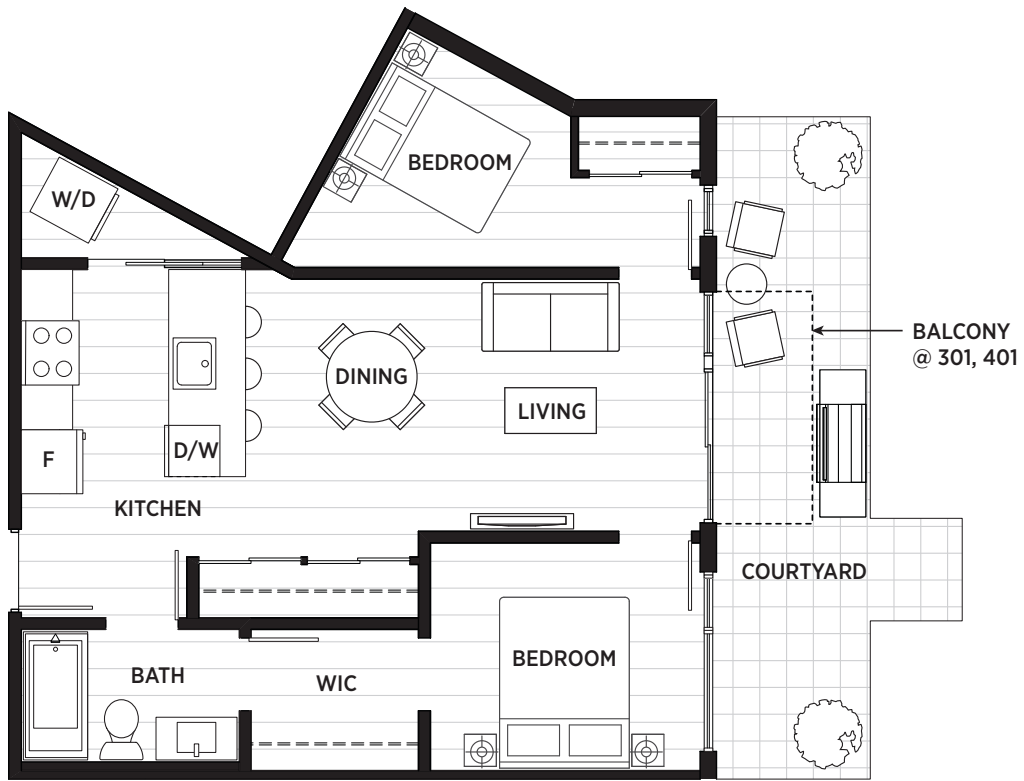




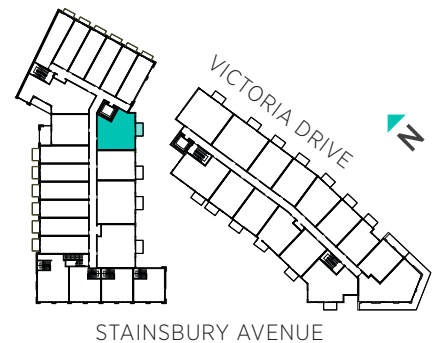
THE VICTORIA

PLAN C3 TWO BEDROOM

TOTAL LIVING : 750 - 875 SQ.FT.
INDOOR : 705 SQ.FT.
OUTDOOR : 45 - 170 SQ.FT.



WEST BUILDING
FLOORS 2 - 4 | UNITS 201, 301, 401



*The developer reserves the right to make modifications and changes. Dimensions, sizes, specifications, layouts, and materials are approximate only, and may be different in person, or subject to change without notice E.&O.E.