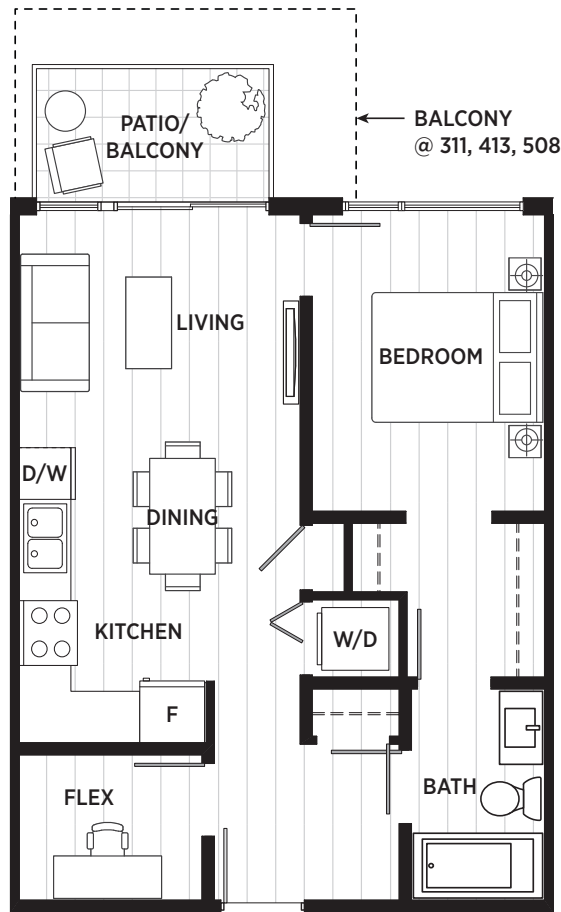




THE VICTORIA

PLAN B1a ONE BEDROOM + FLEX

TOTAL LIVING : 625 - 735 SQ.FT.
INDOOR : 580 - 595 SQ.FT.
OUTDOOR : 45 - 140 SQ.FT.



EAST BUILDING

FLOORS 2 - 4 | UNITS 203, 204, 208, 209, 303, 304, 311, 313, 314, 403, 404, 411, 413, 414

WEST BUILDING

FLOORS 2 - 4 | UNITS 202, 302, 402 — WIC + W/D

FLOOR 3 - 4 | UNITS 311, 413 — WIC

FLOORS 5 - 6 | UNITS 508, 608 — Single entry bathroom



*The developer reserves the right to make modifications and changes. Dimensions, sizes, specifications, layouts, and materials are approximate only, and may be different in person, or subject to change without notice E.&O.E.